

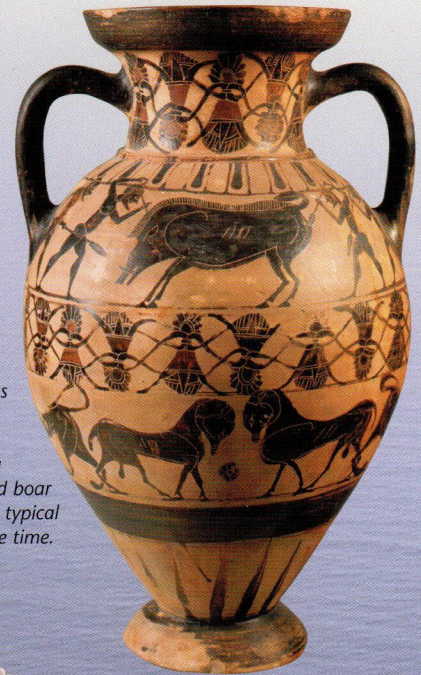
THE ARCHAIC PERIOD

Sometime after 800BC, Greek culture began to show the first signs of a revival. This new era, which lasted until around 500BC, is known as the Archaic Period. The Greek population grew and there was increasing contact with other lands. Greek art improved and the skill of writing was rediscovered and developed (see page 186).



INTERNET LINK

For links to websites where you can see an animated map showing the spread of Greek colonies and design a Greek amphora online, go to www.usborne-quicklinks.com



This vase, called an amphora, was painted in about 560BC. It is decorated with a scene from a wild boar hunt, which was typical of the style of the time.

